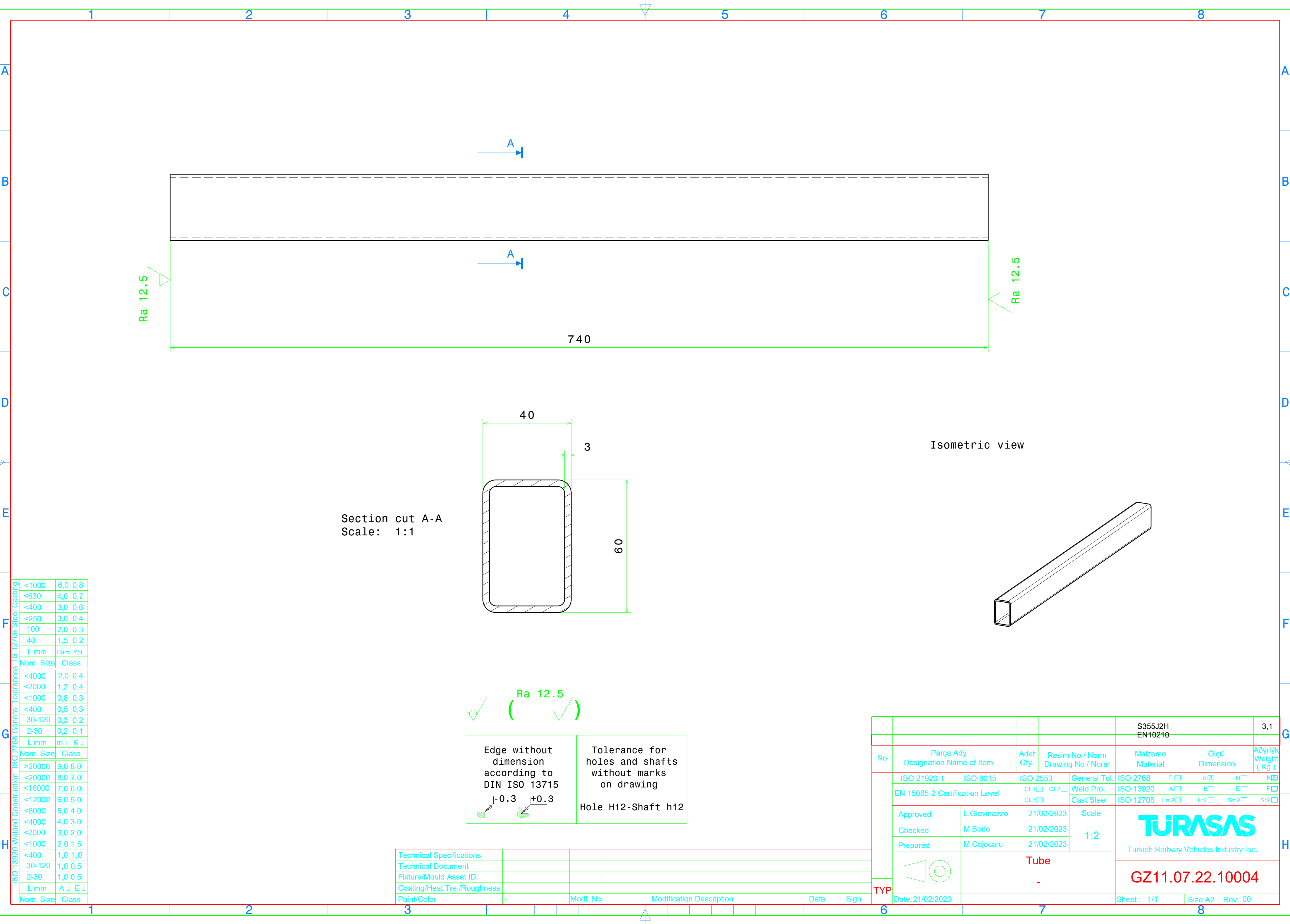


Reproduction, dissemination or use of this document or its all contents in any form without the prior written permission of TURASAS, is prohibited. Offenders will be liable for the payment of damages. All rights reserved in the event of the grant of a patent, utility model or ornamental design registration.



F	ISO 2768 General Tolerances TS 12708 Steel Casting		
	<1000	6,0	0,8
	<630	4,0	0,7
	<400	3,0	0,6
	<250	3,0	0,4
	100	2,0	0,3
	40	1,5	0,2
	L mm	Ham	Ypl.
	Nom. Size	Class	
	<4000	2,0	0,4
G	ISO 2768 General Tolerances TS 12708 Steel Casting		
	<2000	1,2	0,4
	<1000	0,8	0,3
	<400	0,5	0,3
	30-120	0,3	0,2
	2-30	0,2	0,1
	L mm	m ±	K ±
	Nom. Size	Class	
	>20000	9,0	8,0
	<20000	8,0	7,0
H	ISO 13920 Welded Construction		
	<16000	7,0	6,0
	<12000	6,0	5,0
	<8000	5,0	4,0
	<4000	4,0	3,0
	<2000	3,0	2,0
	<1000	2,0	1,5
	<400	1,0	1,0
	30-120	1,0	0,5
	2-30	1,0	0,5
	L mm	A ±	E ±
	Nom. Size	Class	

Technical Specifications					
Technical Document					
Fixture/Mould Asset ID.					
Coating/Heat Tre./Roughness					
Paint/Color	-	Mod. No	Modification Description	Date	Sign

✓ (Ra 12.5) ✓

Edge without dimension according to DIN ISO 13715

-0.3 +0.3

Tolerance for holes and shafts without marks on drawing

Hole H12-Shaft h12

No	Parça Adı Designation Name of Item		Adet Qty.	Resim No / Norm Drawing No / Norm	Malzeme Material	Ölçü Dimension	Ağırlık Weight (Kg)
	ISO 21920-1	ISO 8015	ISO 2553	General Tol.	ISO 2768	f □ mX □ H □ K □	
	EN 15085-2 Certification Level		CL1 □ CL2 □ CL3 □	Weld Pro.	ISO 13920	A □ B □ E □ F □	
				Cast Steel	ISO 12708	Lm2 □ Lr2 □ Sm2 □ Sr2 □	
TYP	Approved	L.Giovinazzo	21/02/2023	Scale	<div>TURASAS</div> <div>Turkish Railway Vehicles Industry Inc.</div> <div>GZ11.07.22.10004</div>		
	Checked	M.Borio	21/02/2023	1:2			
	Prepared	M.Cojocar	21/02/2023				
	Date: 21/02/2023		Sheet : 1/1		Size: A2	Rev: 00	